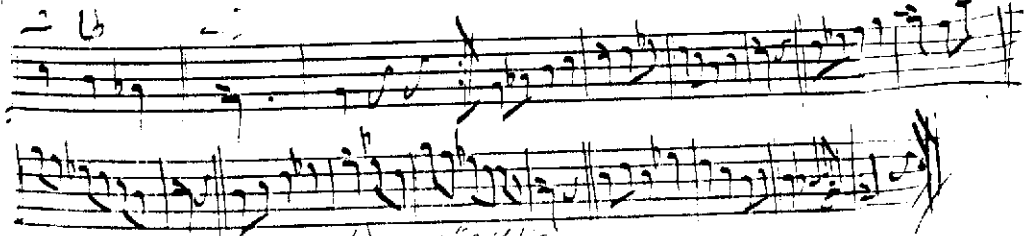
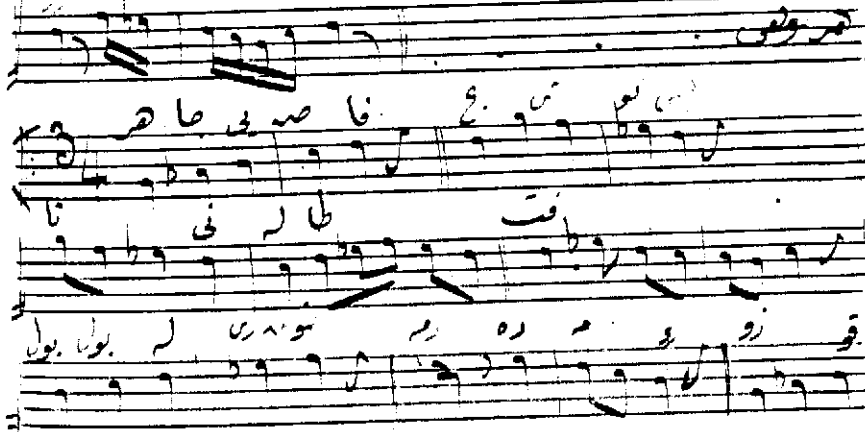
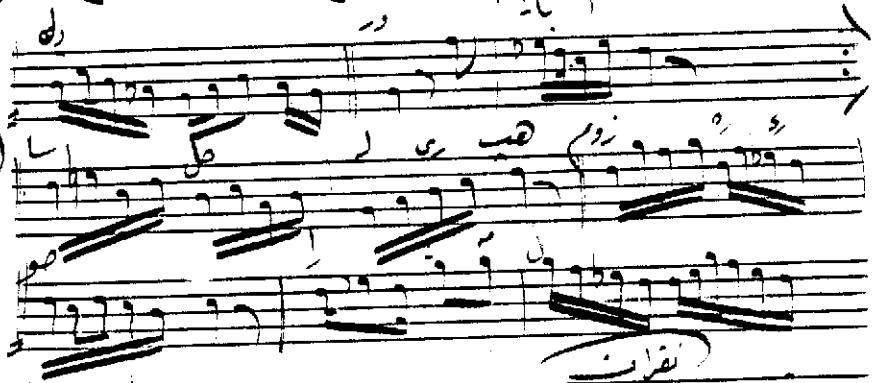


(Baylarbağı'nın) slasale karsıla  
 سونالاشرق اصفول اوڤر قاضی کو بیلا آب و هواس آهه نوزار

(Cade karaman) (Cade karaman)



بینا



Her cing-i vafa-bilke gûşim-i le Toht  
 Bûlbûlî her dem dâme-i ruken sepetet

Kadir gûşim ab ü havas (ah) ne güzeldir  
 Her mekri cennet gûşim-i le Toht  
 Sahilleri hep zünre-i nûrâne meseldir  
 Her mekri...